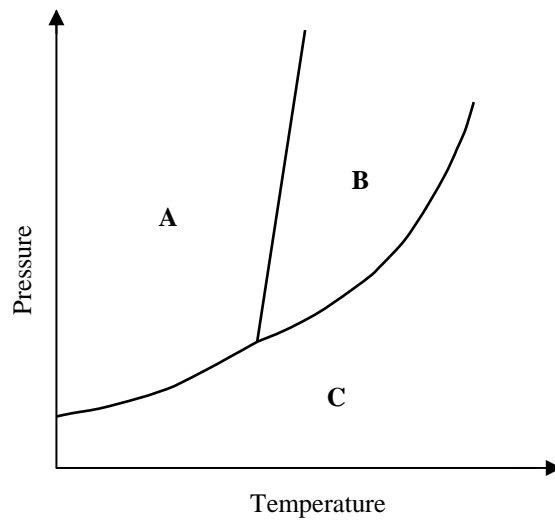


- Examine the following pressure/temperature phase diagram for a one component system.

Marks
6



Which phase exists in the fields labelled **A**, **B** and **C**?

A:	B:	C:
-----------	-----------	-----------

Explain your assignment of these phases.

What do the lines in the diagram represent?

What happens when you move across a line either by changing temperature or pressure?

For a compound with this phase diagram, would the solid be denser than the liquid or vice versa? Explain your answer.