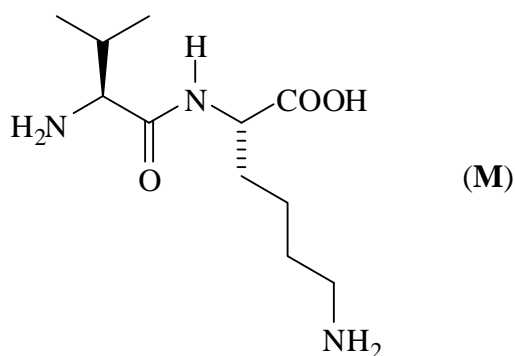


**Marks**  
**6**

- Consider the following molecule (**M**) isolated from a natural source.



Indicate on the above structure all stereogenic centres in molecule (**M**).  
Use numbered asterisks (\*1, \*2, *etc.*).

Select one of these stereogenic centres and determine its absolute configuration.  
Show your working.

Give the products when molecule (**M**) is hydrolysed by heating it with 6 M HCl.  
Make sure you show the products in their correct ionisation states.