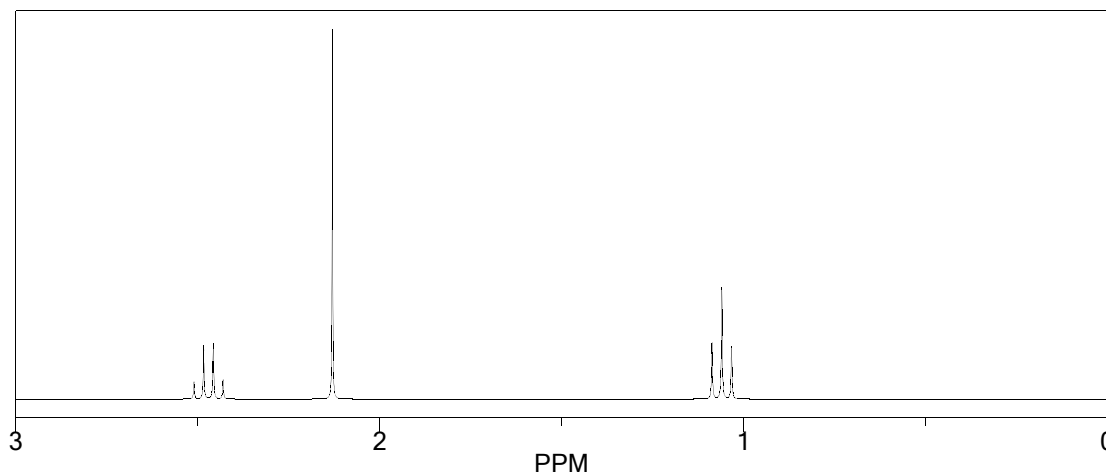


Marks
5

- An unknown compound **K** with the molecular formula C_4H_8O gives the following spectroscopic data.

1H NMR: 1.06 ppm, triplet, integration = 3H
2.13 ppm, singlet, integration = 3H
2.47 ppm, quartet, integration = 2H



IR spectroscopy: stretch at 1715 cm^{-1} .

Use the information above to deduce the structure of compound **K**. Give reasoning for the structure chosen.