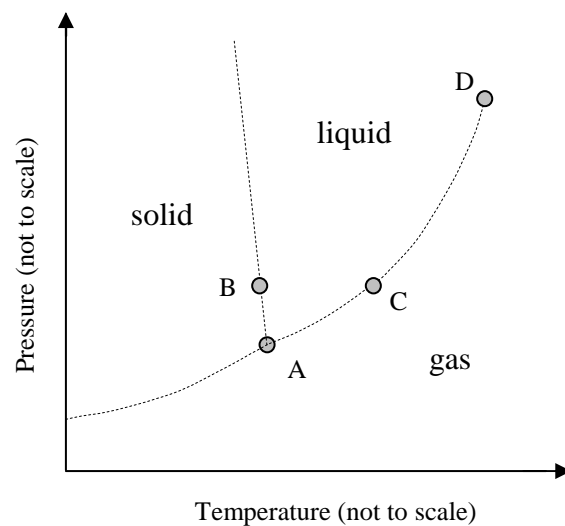


Addition of salt to water raises its boiling point and lowers its melting point. Sketch the phase diagram for water containing salt, showing how it relates to the phase diagram for water (shown as dotted lines below).

Marks
3



In terms of the relative entropies of all relevant species, explain why the boiling point of salt water is higher than that of pure water.

THE REMAINDER OF THIS PAGE IS FOR ROUGH WORKING ONLY.