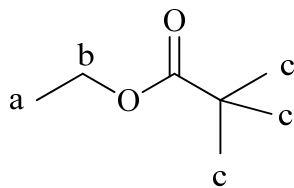


Marks
6

- Below is the structure of an ester.



Using the blank scale below, sketch the ^1H NMR spectrum that you would expect to see for this molecule. You will need to indicate the approximate chemical shift of each signal (by drawing it in the appropriate place on the blank spectrum and labelling the molecule to show which peak is which) as well as the integral associated with each peak and the splitting (multiplicity).

