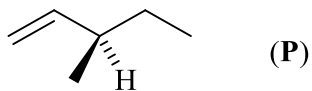


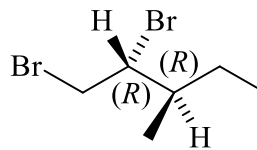
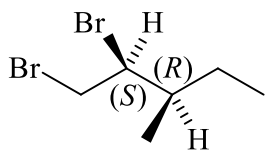
- Consider compound (**P**), whose structure is shown below.



Give the full name of compound (**P**) that unambiguously describes its stereochemistry.

**(R)-3-methyl-1-pentene**

When compound (**P**) reacts with bromine ( $\text{Br}_2$ ), two stereoisomers are formed. Draw the structure of both products and label all stereogenic centres appropriately.



**Marks**  
**4**