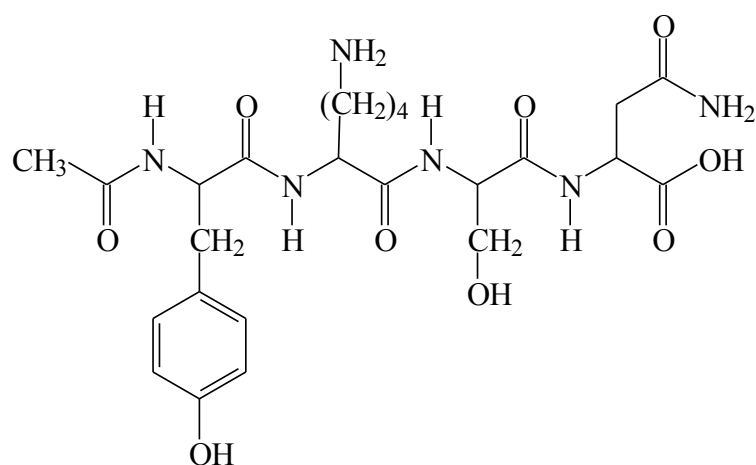
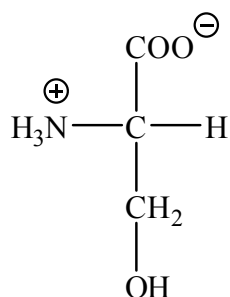


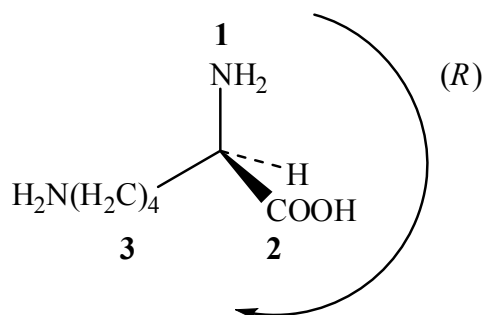
- The constitutional formula of a derivative of the naturally occurring tetrapeptide, Tyr-Lys-Ser-Asn is shown below.



Give the Fischer projection of L-Ser as the zwitterion.



Complete the stereoformula of (R)-Lys.



Give the constitutional formulas in the correct ionic states of the products obtained from the vigorous basic hydrolysis (5 M KOH) of the tetrapeptide.

