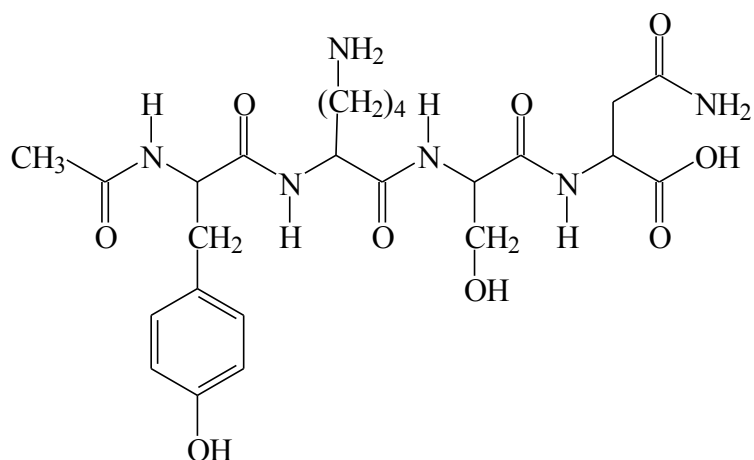


- The constitutional formula of a derivative of the naturally occurring tetrapeptide, Tyr-Lys-Ser-Asn is shown below.

**Marks  
10**



Give the Fischer projection of L-Ser as the zwitterion.	Complete the stereoformula of ( <i>R</i> )-Lys.

Give the constitutional formulas in the correct ionic states of the products obtained from the vigorous basic hydrolysis (5 M KOH) of the tetrapeptide.