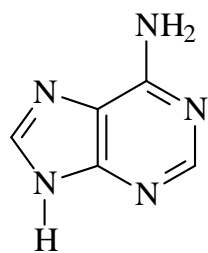
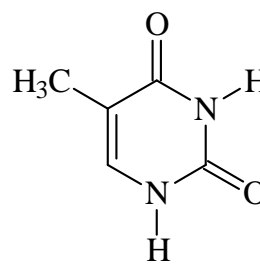


- Adenine and thymine have the structures shown below.

Marks  
4

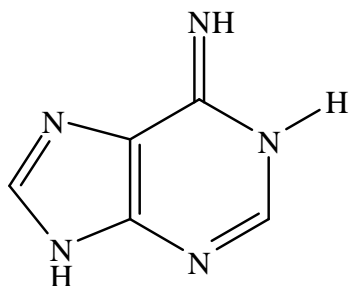


adenine



thymine

Draw a tautomer of the shown structure of adenine.



In DNA, adenine forms a “base pair” with thymine. Explain what is meant by “base pair” and indicate the point(s) of interaction between adenine and thymine.

**Four different bases are found in DNA chains. The two strands in the double helix are held together by 3 hydrogen bonds between guanine (G) and cytosine (C), and by 2 hydrogen bonds between adenine (A) and thymine (T). The complementary bases C and G are called a “base pair”. A and T are another “base pair”.**

