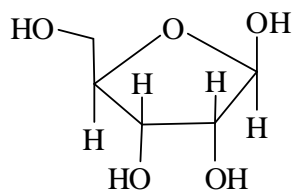
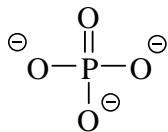


- The following species represent some of the building blocks of RNA.

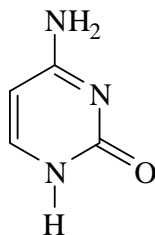
Marks
8



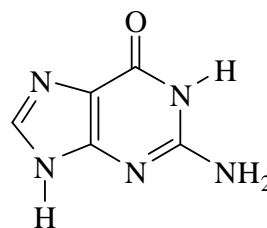
ribofuranose



phosphate



cytosine



guanine

Is the sugar depicted the α - or the β - form? Circle the one correct answer.

α β

Is the sugar depicted a reducing sugar or a non-reducing sugar? Circle the one correct answer.

reducing non-reducing

Indicate on the above structure the 'anomeric' carbon atom that gives rise to the α or the β form.

Draw the Fischer projection of D-ribose.

Using a selection of the species given, draw a nucleoside and a nucleotide.

Nucleoside	Nucleotide
------------	------------

Indicate the likely hydrogen-bonding interactions between complementary strands of RNA containing cytosine and guanine.