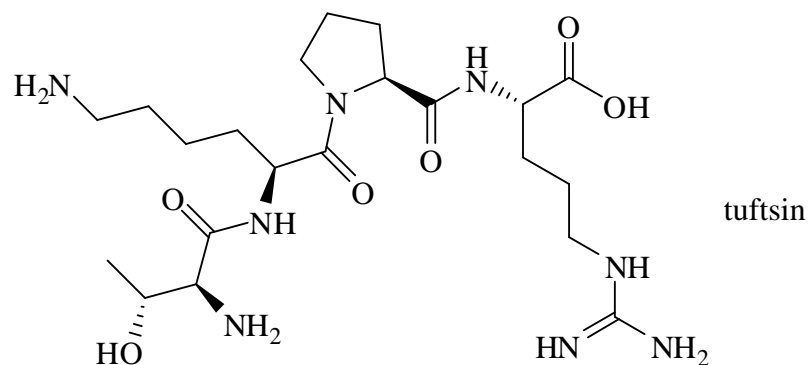


- Tuftsins is a tetrapeptide (Thr-Lys-Pro-Arg) produced by enzymatic cleavage of the Fc-domain of the heavy chain of immunoglobulin G. It is mainly produced in the spleen and its activity is related primarily to immune system function.



Draw the Fischer projections of the four L-amino acids that result from the acid hydrolysis of tuftsins.
