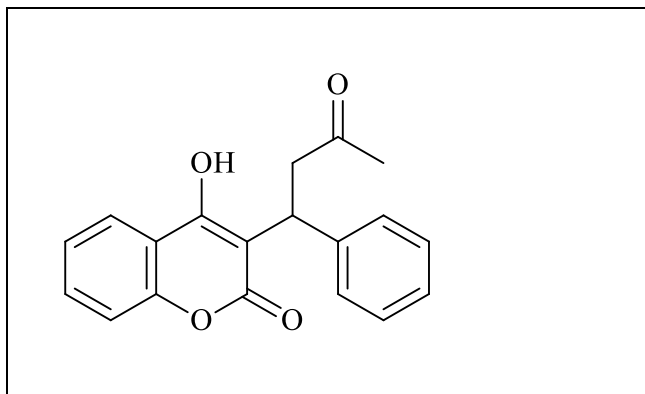
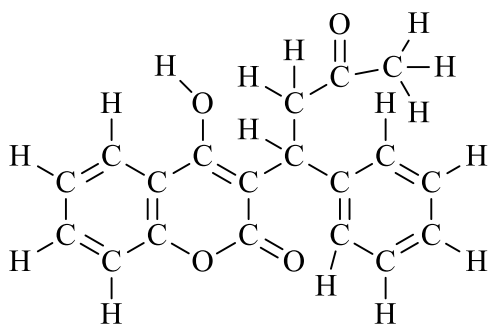
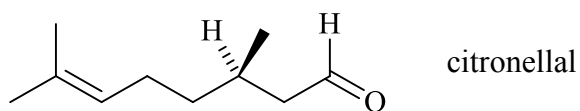


- A structural formula for Warfarin, an anticoagulant, showing all atoms and bonds is shown below. Draw a stick representation of the formula in the box provided.

**Marks**  
**1**

**Marks**  
**2**

- (+)-Citronellal is a widely occurring natural product present in citronella oil, lemon and lemon grass. It is used as a soap perfume and in insect repellents.



Give the molecular formula of citronellal.



Identify the functional groups present in citronellal.

**Aldehyde and alkene**