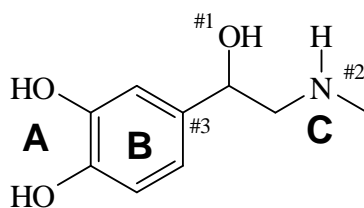


- The molecular structure of adrenaline (epinephrine), a hormone involved in the "fight or flight" response, is shown below.



**Marks**  
**4**

Provide the requested information for each of the indicated sites on adrenaline.

Atom	Geometric arrangement of the electron pairs around the atom	Hybridisation of the atom	Geometry around the atom	Approximate angles around the atom
#1 O				
#2 N				
#3 C				