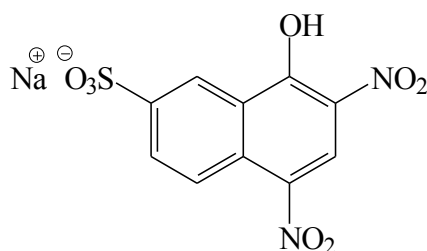
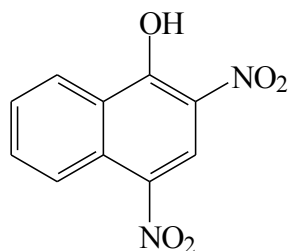


- Consider the following two compounds.



(I) Martius Yellow      (II) Naphthol Yellow S

On ingestion of compound (I), death from liver failure occurs very quickly. In contrast, compound (II) is completely non-toxic and is used as an artificial colouring agent. Explain, using the model of biological membranes, why (I) is highly toxic.

**Marks**  
**3**

- Give three examples of colloids in biological systems, and complete the following table. Paint is given as an example of a synthetic (non-biological) system.

**3**

Name of colloid	Discrete phase	Continuous phase
<i>paint</i>	<i>synthetic polymer</i>	<i>water</i>