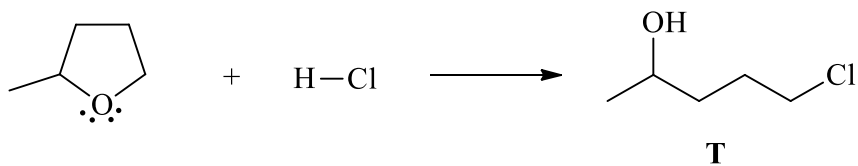
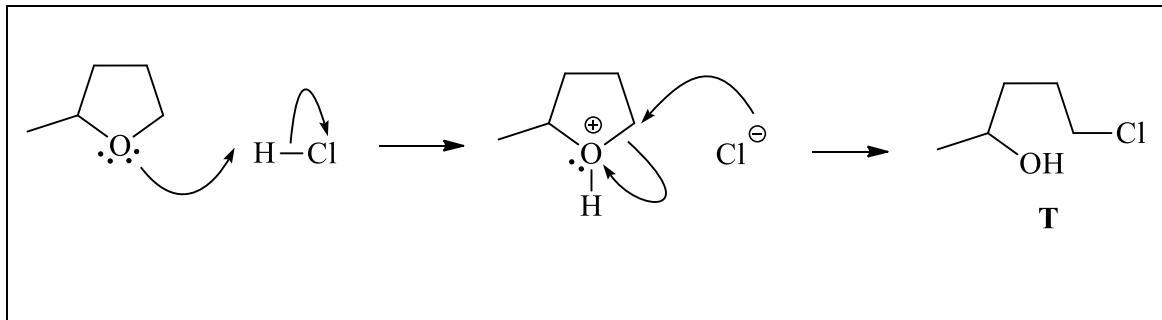


- Propose a mechanism for the following reaction.

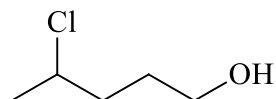


**Mark
s
4**



What isomeric product might also form in this reaction?

If the Cl⁻ attacks on the left hand side of the molecule, the analogous reaction leads to:



Why is T the major product?

Steric effects. The CH₂ group on the right is more accessible than the CH(CH₃) group on the left for S_N2 attack by the Cl⁻ nucleophile.