

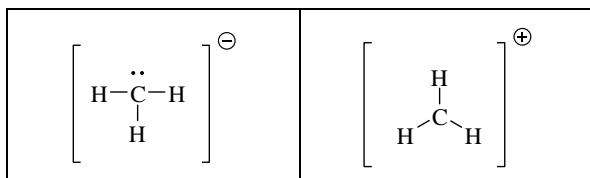
CHEM1108 Chemistry 1A (Life Sciences) - June 2007

2007-J-2

•

	carbon dioxide	+IV	0
	sodium chromate	+VI	0
	iron(III) chloride-3-water	+III	5
K ₂ SO ₄			

•

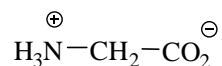


CH₃⁻ will be more stable as it has a full octet of electrons

- 1.45 g

2007-J-3

•



C1 (terminal C)	<i>sp</i> ²	trigonal planar
C2 (middle C)	<i>sp</i> ³	tetrahedral
N	<i>sp</i> ³	tetrahedral

Major intermolecular force is ionic bonding between the positively and negatively charged ends of the molecule.

- 13.6 kg

2007-J-4

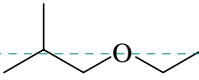
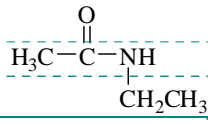
•

0.386 g

0.0444 M

0.133 M

2007-J-5

	1. NaBH ₄ 2. H ⁺ / H ₂ O	
	dilute H ₂ SO ₄ / heat	2-butanol
		
	Cr ₂ O ₇ ²⁻ / H ⁺	3-methylcyclohexanone
propyl acetate	3 M NaOH / heat	CH ₃ CO ₂ [⊖] + CH ₃ CH ₂ CH ₂ OH
		CH ₃ CO ₂ [⊖] + 

Formatted Table

Formatted: Font: 12 pt

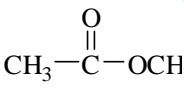
Formatted: Font: 12 pt

Formatted: Font: 12 pt

Formatted: Font: 12 pt

Formatted: Centered, Space After: 0 pt

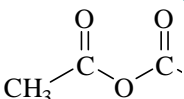
Formatted: Space Before: 6 pt, After: 6 pt

Deleted: 
Name:

Formatted: Font: Not Bold

Formatted: Font: Not Bold

Formatted: Font: 12 pt

Deleted: 

Formatted: Font: 12 pt

Formatted: Space Before: 6 pt, After: 6 pt

Deleted: excess CH₃CH₂NH₂

Formatted: Font: 12 pt

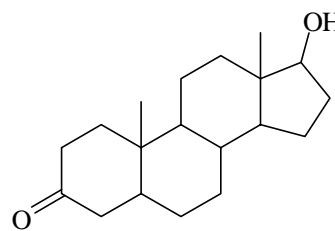
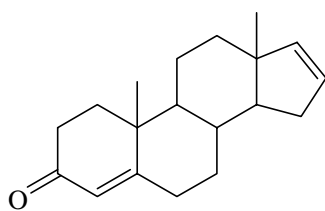
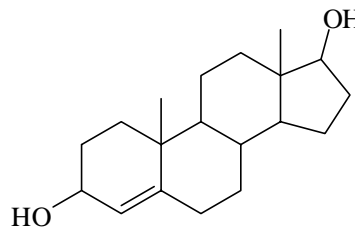
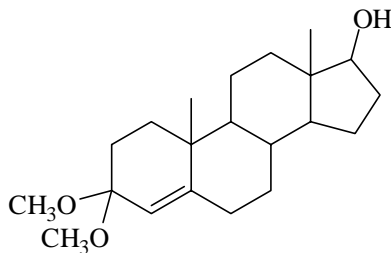
Formatted: Font: Not Bold

2007-J-6

C₁₉H₂₈O₂

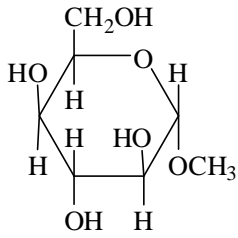
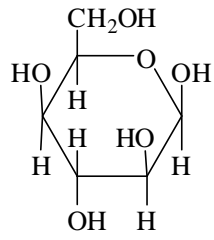
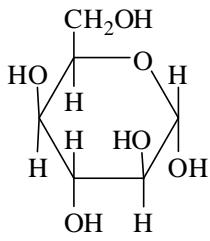
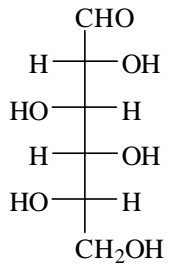
ketone, alkene, alcohol (secondary)

6

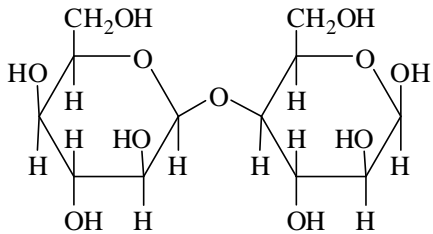
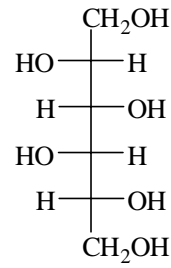
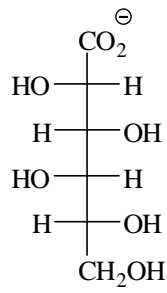
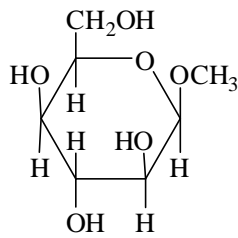


2007-J-7

•



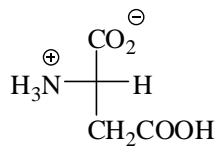
+



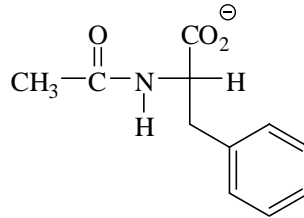
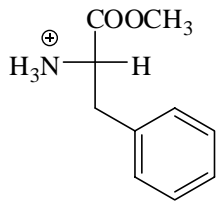
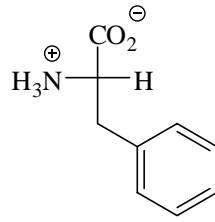
2007-J-8

•

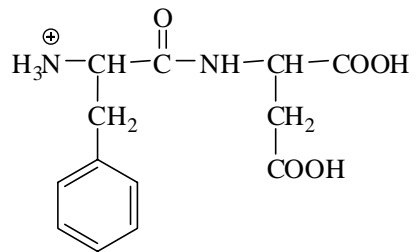
Asp



Phe



pH 1.0



pH 12.0

